

# DUCT BOARD CUTTING TOOLS

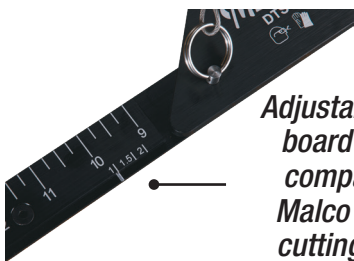


**PRECISE, DURABLE, AND SIMPLE**

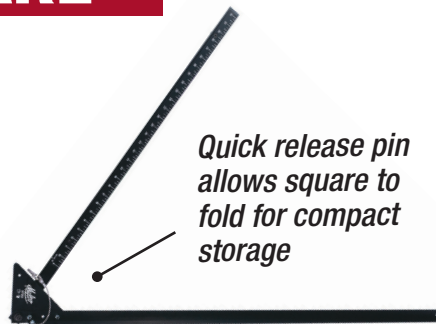
**Complete Your Duct Board Setup –** Pair Malco duct board cutters with the Duct Board Square Tool (DTSQ) for accurate layout and consistent cutting results.

## DUCT BOARD SQUARE

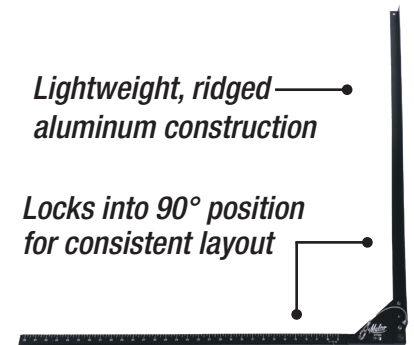
Catalog # DTSQ



Adjustable scale for board thickness, compatible with Malco duct board cutting tools only



Quick release pin allows square to fold for compact storage

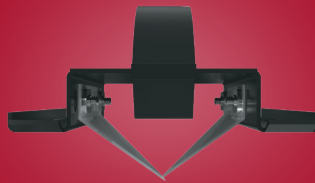


Lightweight, ridged aluminum construction

Locks into 90° position for consistent layout

## V-CUT

Perfect for creating clean, precise V-groove cuts for foldable duct board joints.



## CUT-OFF

Designed for straight-edge, shiplap, and end cuts.



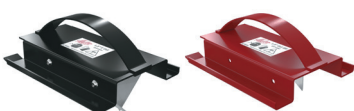
SIZES	CATALOG #	CUT SIZE & TYPE	COLOR
	DT1V	1" V-Cut	Black
	DT15V	1.5" V-Cut	Black
	DT2V	2" V-Cut	Black

REPLACEMENT BLADES AVAILABLE

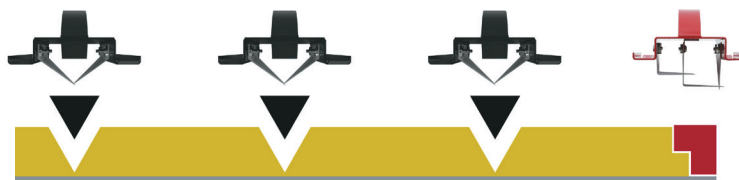
SIZES	CATALOG #	CUT SIZE & TYPE	COLOR
	DT1C	1" Cut Off	Red
	DT15C	1.5" Cut Off	Red
	DT2C	2" Cut Off	Red

## FEATURES

**HEAVY-DUTY STEEL SLED FRAME**  
Thicker base for prolonged durability



**PRODUCES PRECISE V-GROOVE AND CLEAN EDGE CUTS**



**HIGH-GRADE HEAT-TREATED STAINLESS-STEEL BLADES**  
Corrosion resistant & superior edge retention

